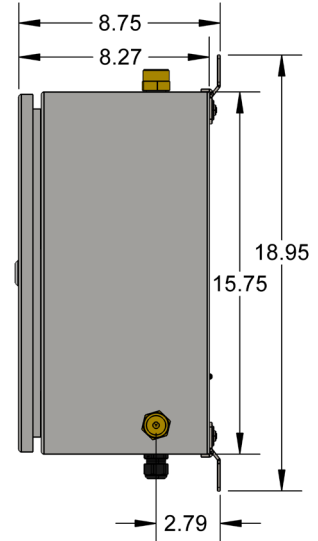
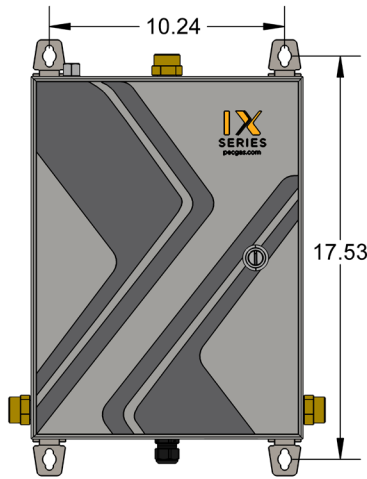
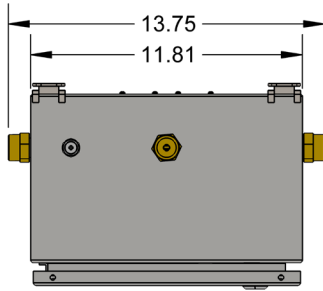




The **IX Series® for fuel gases** uses modern technology and industry leading UL / cUL certification to provide the industrial gas market with an intrinsically safe fuel gas control system that brings focus to customers' needs. The X-Treme Manifold Control® provides real time alerts to any electronic device, and updates on gas status and historical usage online, on an easy-to-read dashboard. This dashboard is configured to be viewed on a mobile device, offering flexibility when using the system from a phone, tablet, or PC. Our complimentary service is new to the industry, and truly a comprehensive alternative to other telemetry options.



FEATURES

24/7 LEAK DETECTION

Will continuously monitor the reserve supply and provide leak indication lights and push a status alert if pressure is lost.

CYLINDER MANAGEMENT

Any cylinder type can be used. Select from high-pressure or low-pressure source, including three different relief valve settings.

INTERNATIONAL POWER INPUT

AC 85 – 264V 50/60Hz 0.7A Class II (Includes a 6' Power Cord with NEMA 5-15P plug).

FULL-AUTOMATIC CHANGEOVER & EASY RESET

Once in-use side is depleted, the reserve side will flow uninterrupted, and the system will automatically switch to the reserve supply maintaining the integrity of the delivery gas supply. Manifold will reset the empty bank automatically on cylinder changeout.

GAS PRIORITY CONTROL

Can select a side being the primary supply when using a bulk supply and high-pressure mixed cylinder configuration by prioritizing the left or right bank.

3000 PSI MAXIMUM INLET

UL cUL Listed for Fuel Gas applications

Intrinsically Safe Gas Panel

WIRELESS & LAN CONNECTIVITY

Connect to web-based telemetry using Wi-Fi network.

SERIAL 232/485 CONNECTION

Connect to Modbus or stream data using other protocols.

FLEXIBILITY

Uses individual high-pressure cylinders, and multi-cylinder packs interchangeably without modification.

WEATHERPROOF

Rated for IP65 location and can be placed outside in direct water spray or dusty conditions.

GAS STATUS LED'S

3-LED status indicators for each gas bank.

1- Economizer "ON" LED for each gas bank

1- "Leak Detected" LED for each gas bank

ACCURATE PRESSURE DISPLAY

Improved inlet pressure reading and switchover setting to 1-PSI increments.

SECURE CONTROLLER

Tamperproof user settings guarded by password protects the integrity of the controller from unauthorized use.

APPLICATIONS

Continuous Flow with Auto Reset

Provides a continuous flow of gas. Once the In-Use bank is depleted the Reserve bank will flow uninterrupted. After empty cylinders are replenished, the control automatically resets that bank to Ready for Use or to In-Use, depending on if the bank has a priority setting.

After empty cylinders are replenished, the control automatically resets that bank to Ready for Use or to In-Use, depending on if the bank has a priority setting.

Cutting/Heating/Brazing

Perfect for small or large fabrication shops using gas for individual torches, or cutting machines

Furnace Heat Treating

Delivery Pressure Models up to 400 psig delivery depending on gas type.

Carbonizing

Use as uninterrupted supply of raw gas for process.

Hydrogenating

Use hydrogen as an uninterrupted supply of raw gas for process.

Leak Detection Mix

Use as an uninterrupted supply of gas for process.

MATERIALS

Mechanical Enclosure

Steel powder coated enclosure with latch, Rated IP 65

Controller Enclosure

Polycarbonate with lockable latches, rated, IP65

Regulators

Brass bar stock and fabric reinforced neoprene diaphragms, encapsulated PTFE seat.

Tubing

3/8" stainless steel tubing with 2-ferrule tube connections.

Solenoid Valves

Brass explosion 12 VDC explosion proof coils.

Shutoff valves

Forged brass and conform to CGA V-9 and CGA V-1

Headers

Brass headers, hydrostatically tested to Minimum of 4500 psig

Pigtails

Flexible Stainless-Steel Teflon® or Tefzel® inner core, Cleaned, Capped, & Bagged

Cleaning

Meets CGA G-4.1

SYSTEM INCLUDES

UL cUL Listed

IX Series® Gas Panel
X-Treme Manifold Control®

Cylinder Leads

Flexible stainless-steel pigtails with gas specific CGA cylinder with check valve connection. IX 6 Series include an individual dry flame arrester/check valve.

Pipeline Relief Valve Outlet Assembly

Includes pipeline relief safety relief valve set to either 200 or 500 psig depending on the final delivery pressure.

IX 50HF, IX 50LF, & IX6 Series outlet assembly includes a pipeline flashback arrester with the outlet relief valve assembly

Headers

Expandable heavy wall brass. Rated 3000 PSIG working pressure

Shutoff Valves

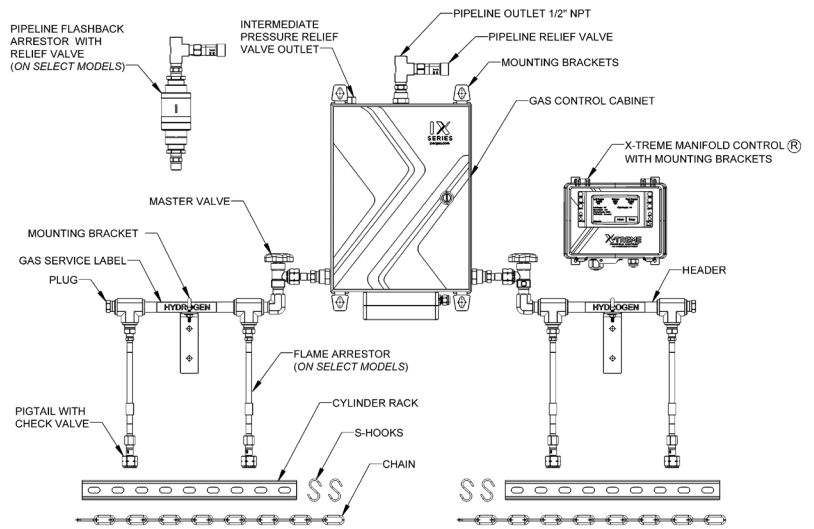
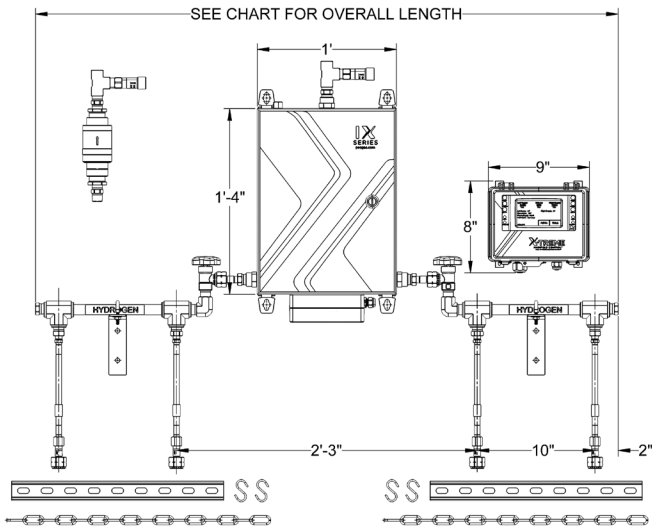
Header master valves provide a layer of protection when replacing high-pressure cylinders

Mounting Hardware

Mounting brackets for gas panel, controller, and headers

Cylinder Restraints and Chain

Unistrut channel conforms to ASTM A1011 SS GR 33 E-Coat finish



UL /cUL SERIES	GAS SERVICE	DELIVERY RANGE	RATED INLET PRESSURE
IX 1F	Hydrogen, Methane	5 - 125 PSIG	3000 PSIG
IX 2F		5 - 200 PSIG	
IX 3F		20 - 400 PSIG	
IX 50HF		2 - 50 PSIG	
IX 50LF	LPG	2 - 50 PSIG	500 PSIG
IX 6	Acetylene	2 - 15 PSIG	

NUMBER OF CYLINDERS & OVERALL LENGTH						
Header Type	2	4	6	8	10	12
Standard	2' - 4"	4' - 6"	6' - 2"	7' - 10"	9' - 0"	10' - 8"
Close Space	2' - 0"	4' - 0"	4' - 0"	4' - 10"	5' - 8"	6' - 6"